

SPSS AppStream - COM385 Spring 2023

This is an old page, replaced by: [Fall 2023](#)

[AppStream Instructions](#)

These directions are for the use of SPSS via a web browser (instead of installing it on your own computer)**for COM385 Spring 2023**

Get Help

- Contact your instructor for help with course/lab directions
- If the issue is a technical one, you can contact Chi Shen cshen@uri.edu

Access SPSS

1. Go to <https://myapps.microsoft.com>
2. Look for two items:
 - **SPSS AppStream (Instant) -- Quick session start, use during scheduled labs.**
Not available at other times.



SPSS AppStream
(Instant)

- SPSS AppStream -- 2-3 minute wait for start, available at all times.



SPSS AppStream

3. Click the SPSS icon:



Google Chrome

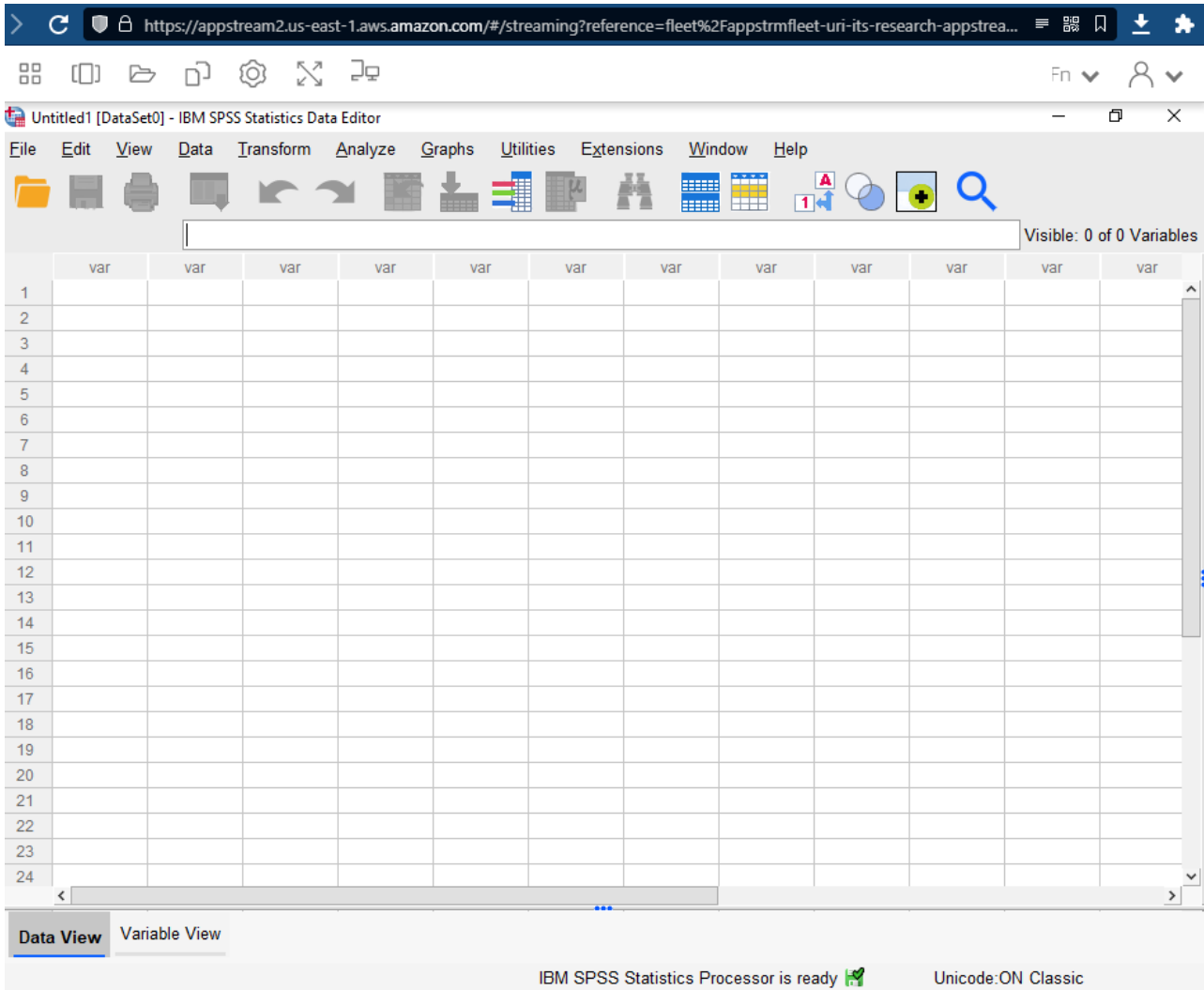


SPSS Statistics



Windows Explorer

4. Once started, your session should look like this -- this is SPSS running in a virtual Microsoft Windows server:

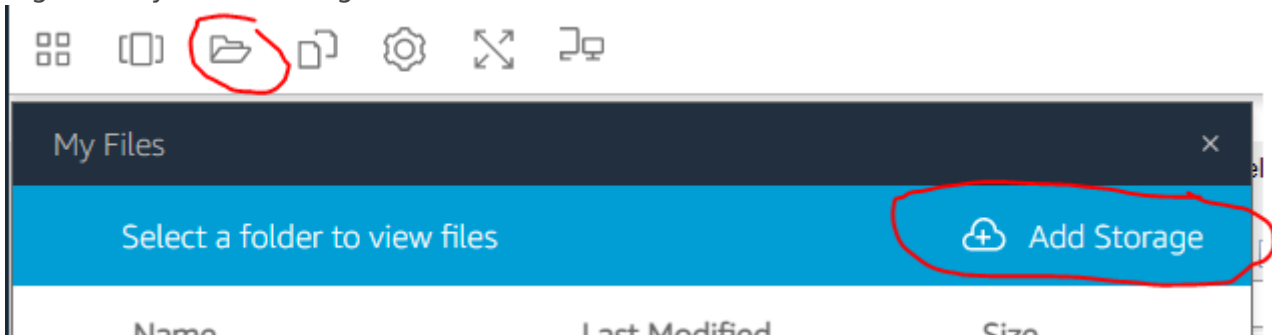


Opening / Saving Files

Storage - Google Drive

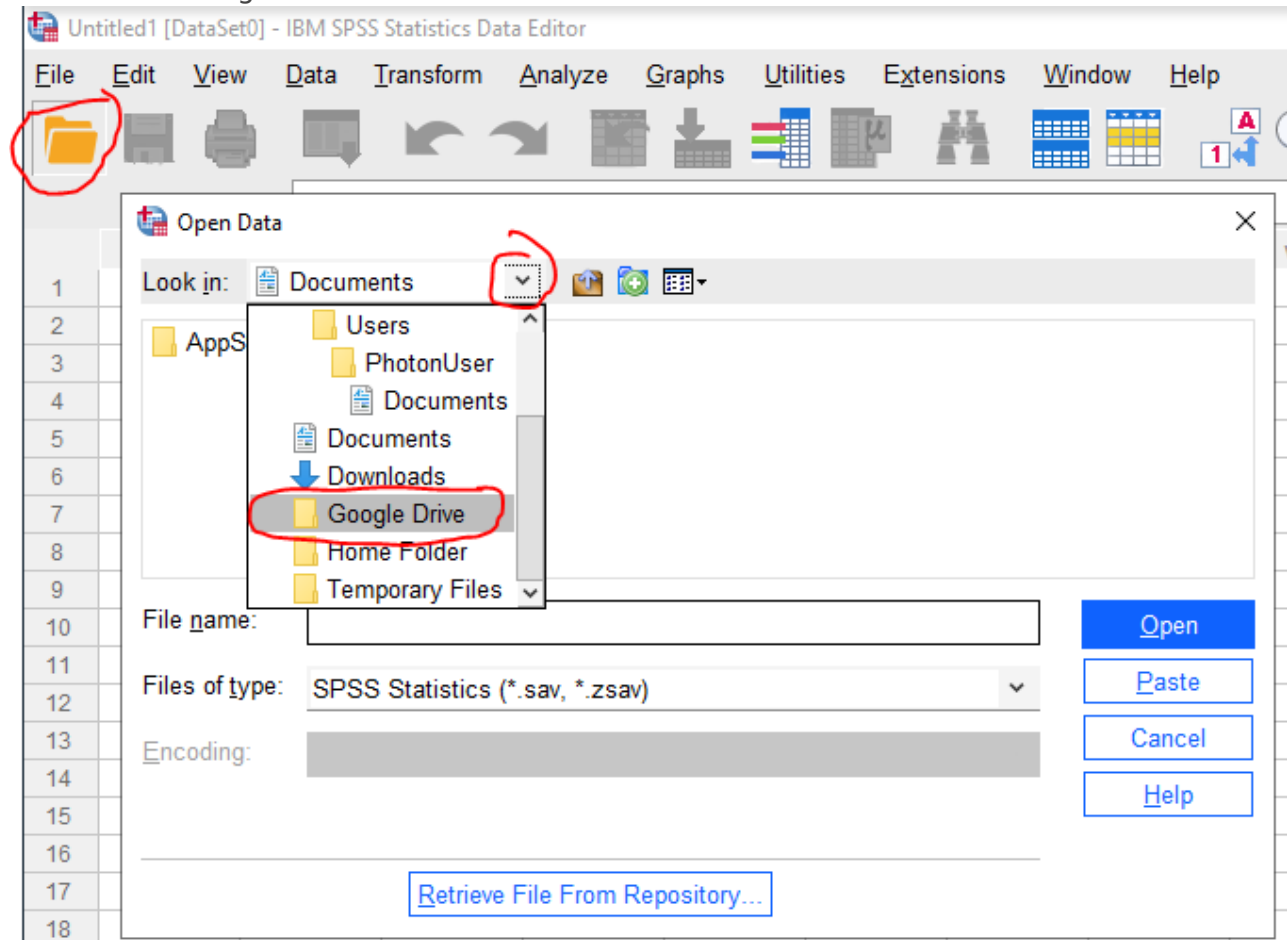
You can link your AppStream sessions to your URI Google Drive.

- Perform the one-time linking -- after clicking Add Storage, select Google Drive, and then login with your URI Google credentials.



- Once linked, the Google Drive option will appear for opening and saving files. This may take 30-60 seconds for the link to fully complete. Future AppStream sessions will not need

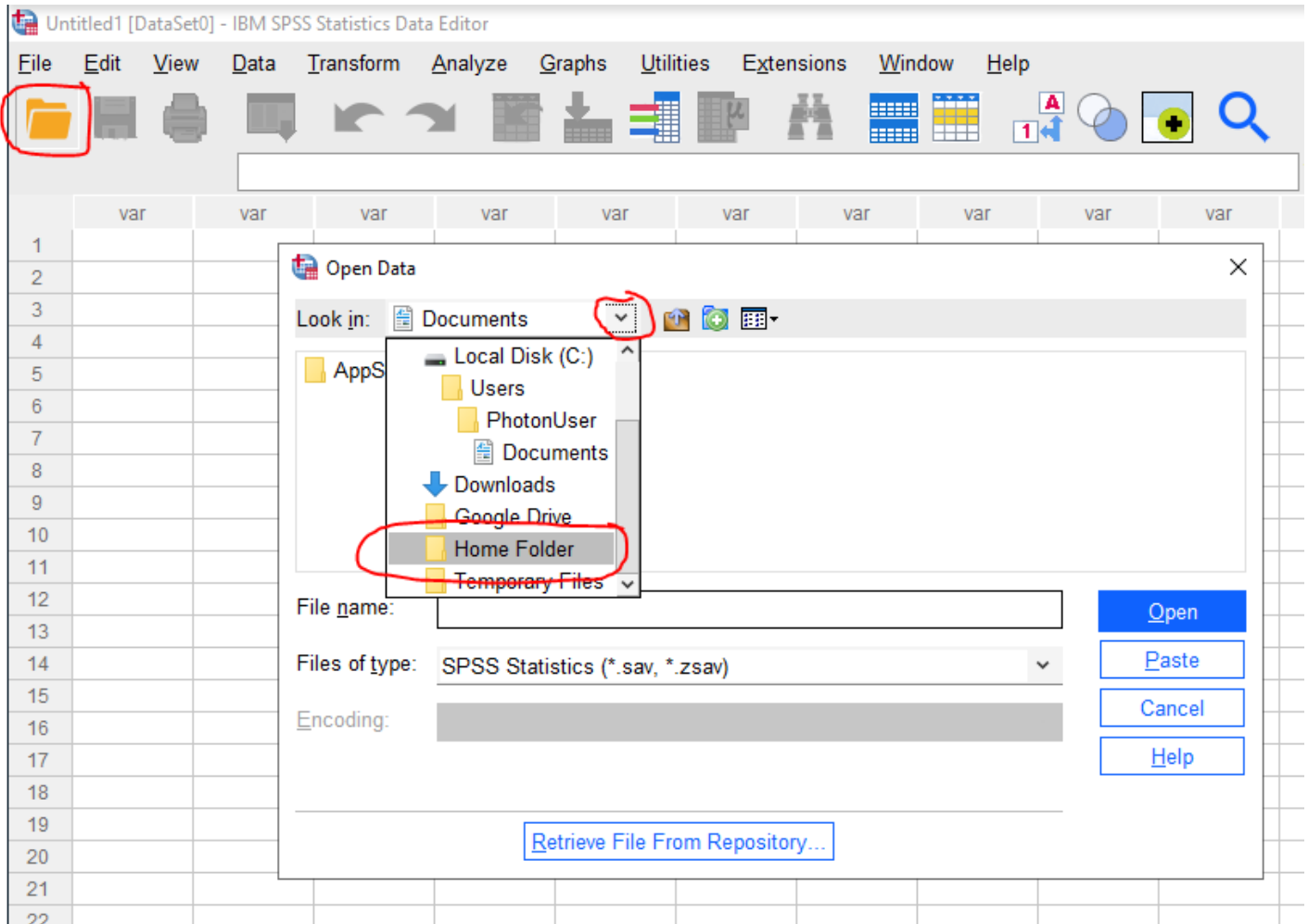
to re-link to Google Drive.



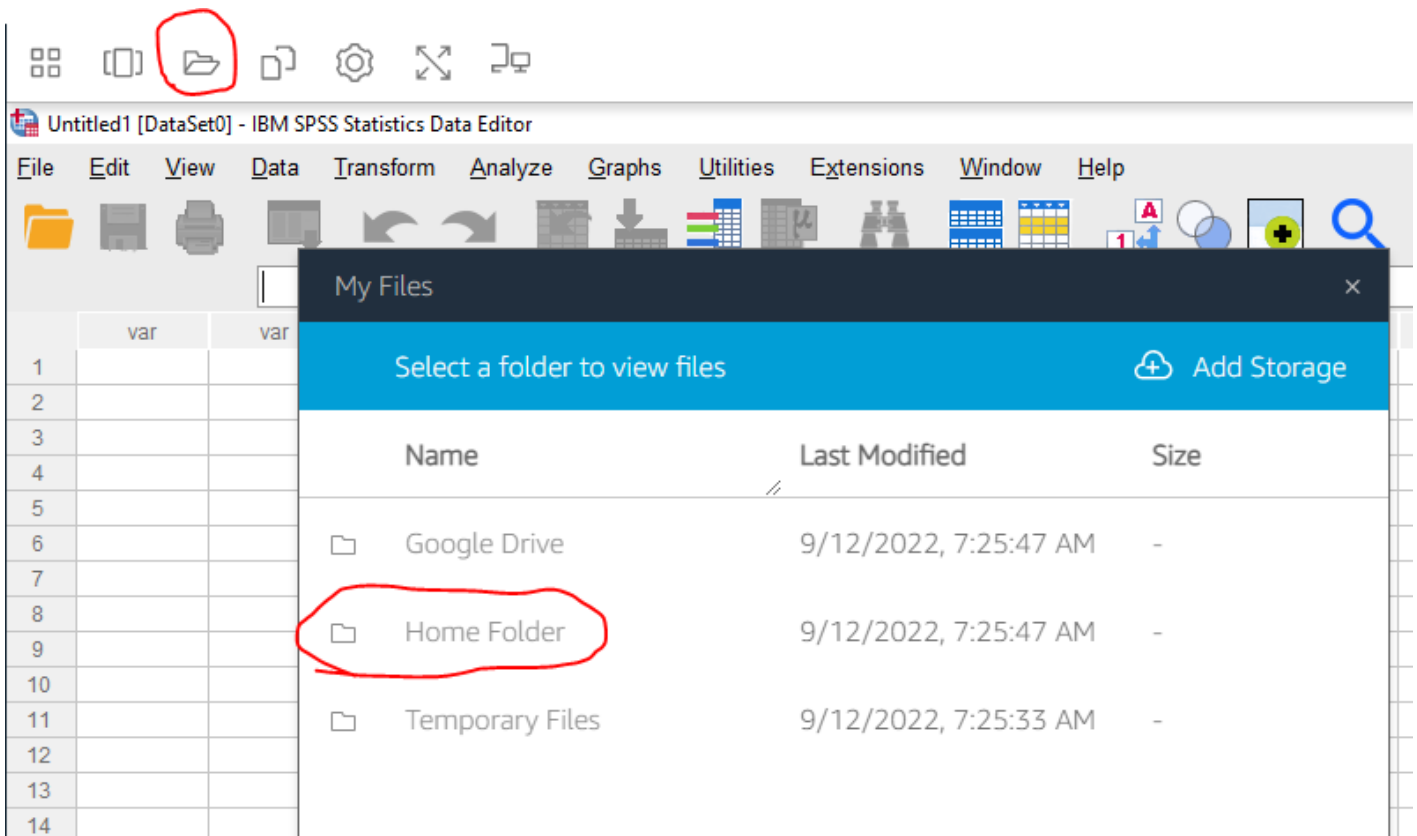
- Use Google Drive to open files shared with you by the instructor, and save your files to your own Google Drive.

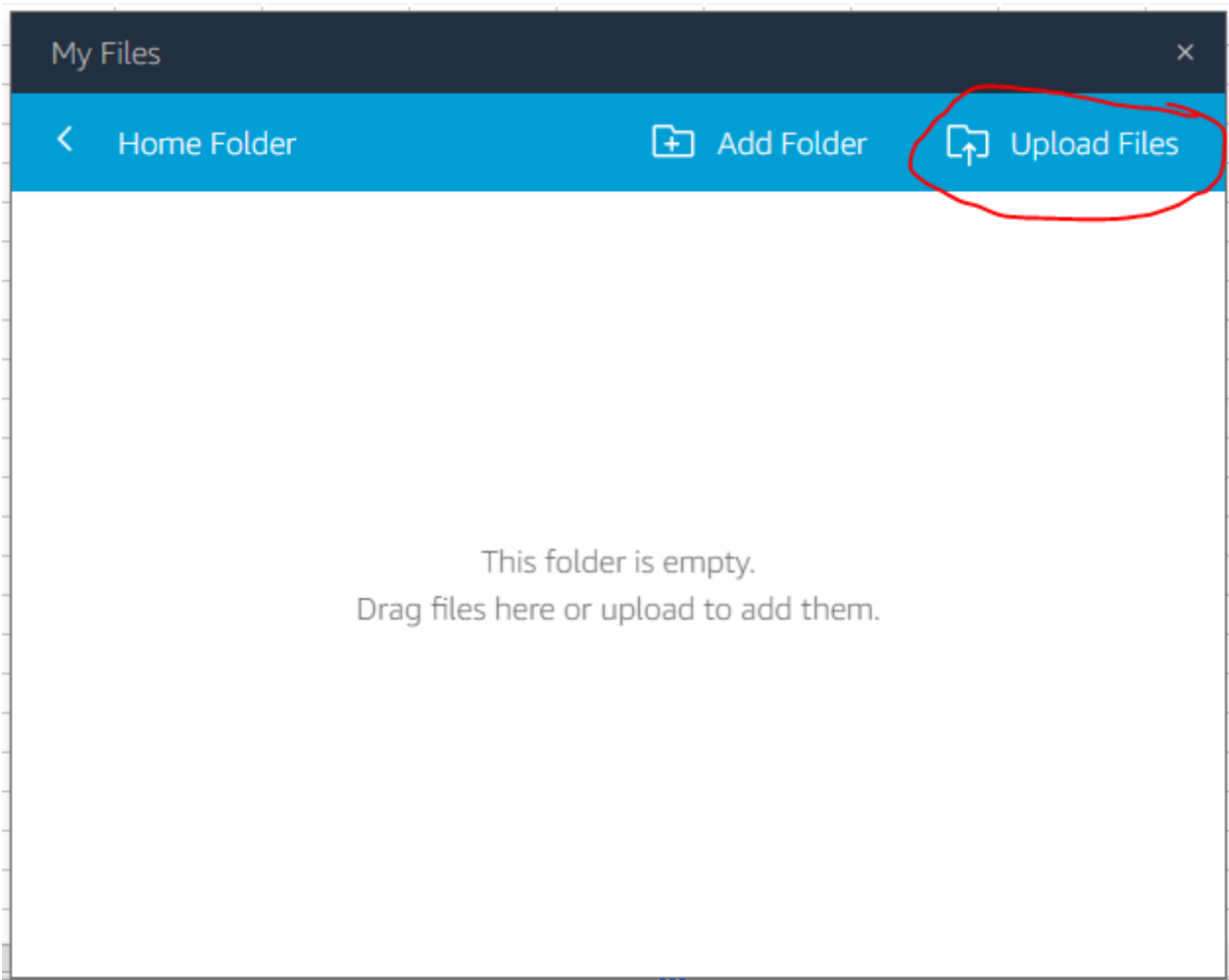
Storage - Home Folder

When saving and opening files, you can also use the special "**Home Folder**". This area persists across all AppStream sessions.



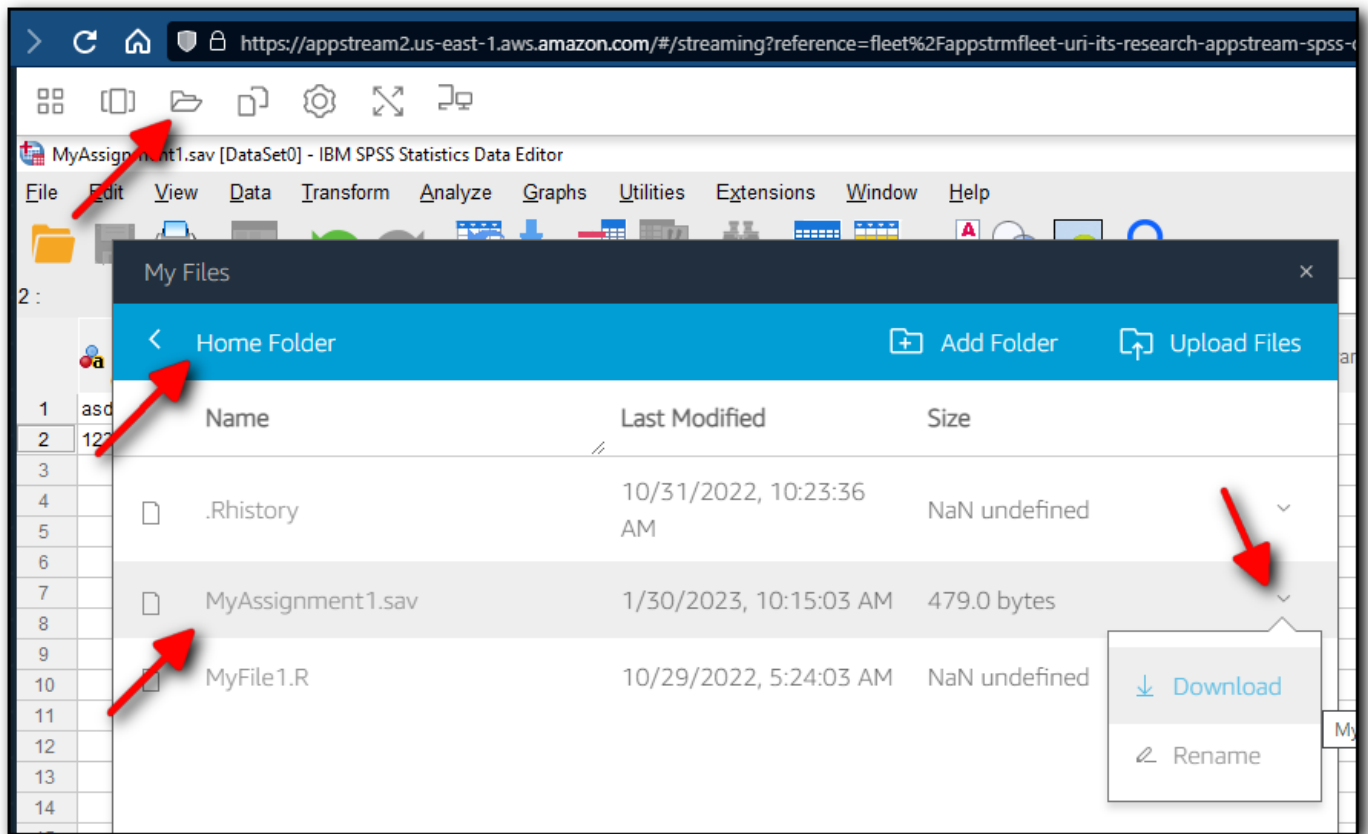
If you need to upload to the Home Folder from your own computer:





Downloading Files to Your Computer

Once you have saved your files to either the **Home Folder** or **Google Drive**, you can download the files to your own computer. This is sometimes needed, for example, when your instructor needs you to submit your files for handing in an assignment.



Ending Your Session

There are no special directions for ending your SPSS AppStream session. You can just close your browser window / tab.

If you are using a public / shared / lab computer be sure to log yourself out of any accounts!

IT Notes (students don't need to read)

- COM385
- Gerald Jalette jalette@uri.edu
- Active Directory group: Course-2023-Spring-COM-385
- Tue/Thu 11:00a - 12:15pm (25)

Revision #8

Created 2023-02-13 16:19:43 EST by Chi Shen

Updated 2026-02-24 20:49:31 EST by Chi Shen