

# SPSS AppStream - PSY Spring 2023

\*\*These directions are for the use of SPSS via a web browser (instead of installing it on your own computer)\*\***for various Spring 2023 courses of the URI Psychology department.**

## Get Help

- Contact your instructor for help with course/lab directions
- If the issue is a technical one, you can contact Chi Shen [cshen@uri.edu](mailto:cshen@uri.edu)

## Access SPSS

1. Go to <https://myapps.microsoft.com>
2. Look for two items:
  - **SPSS AppStream (Instant) -- Quick session start, use during scheduled labs.**  
Not available at other times.



SPSS AppStream  
(Instant)

- SPSS AppStream -- 2-3 minute wait for start, available at all times.

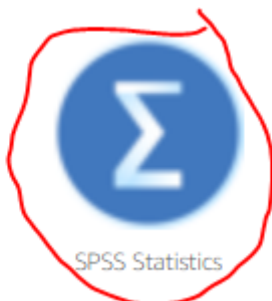


SPSS AppStream

3. Click the SPSS icon:



Google Chrome

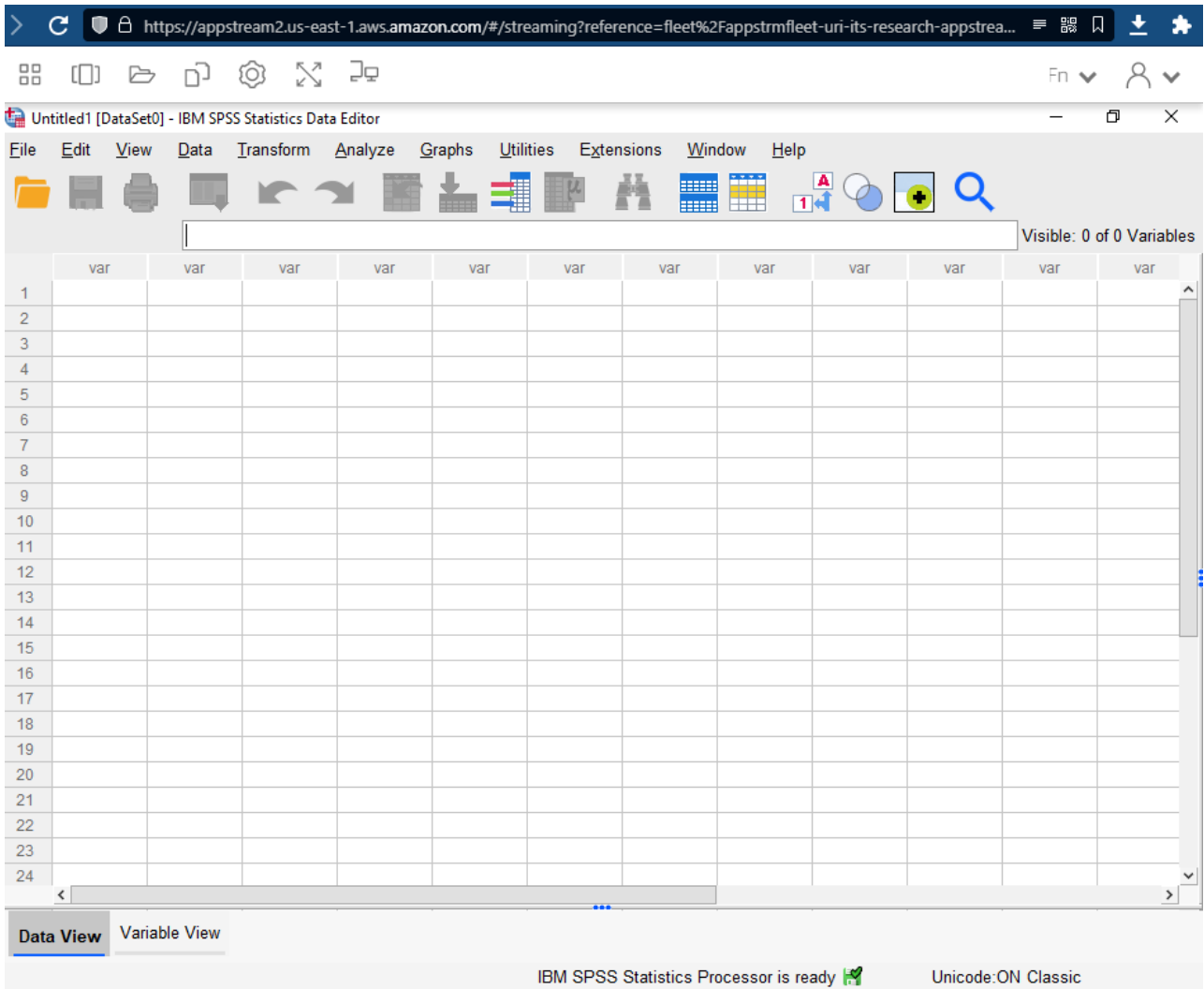


SPSS Statistics



Windows Explorer

4. Once started, your session should look like this:

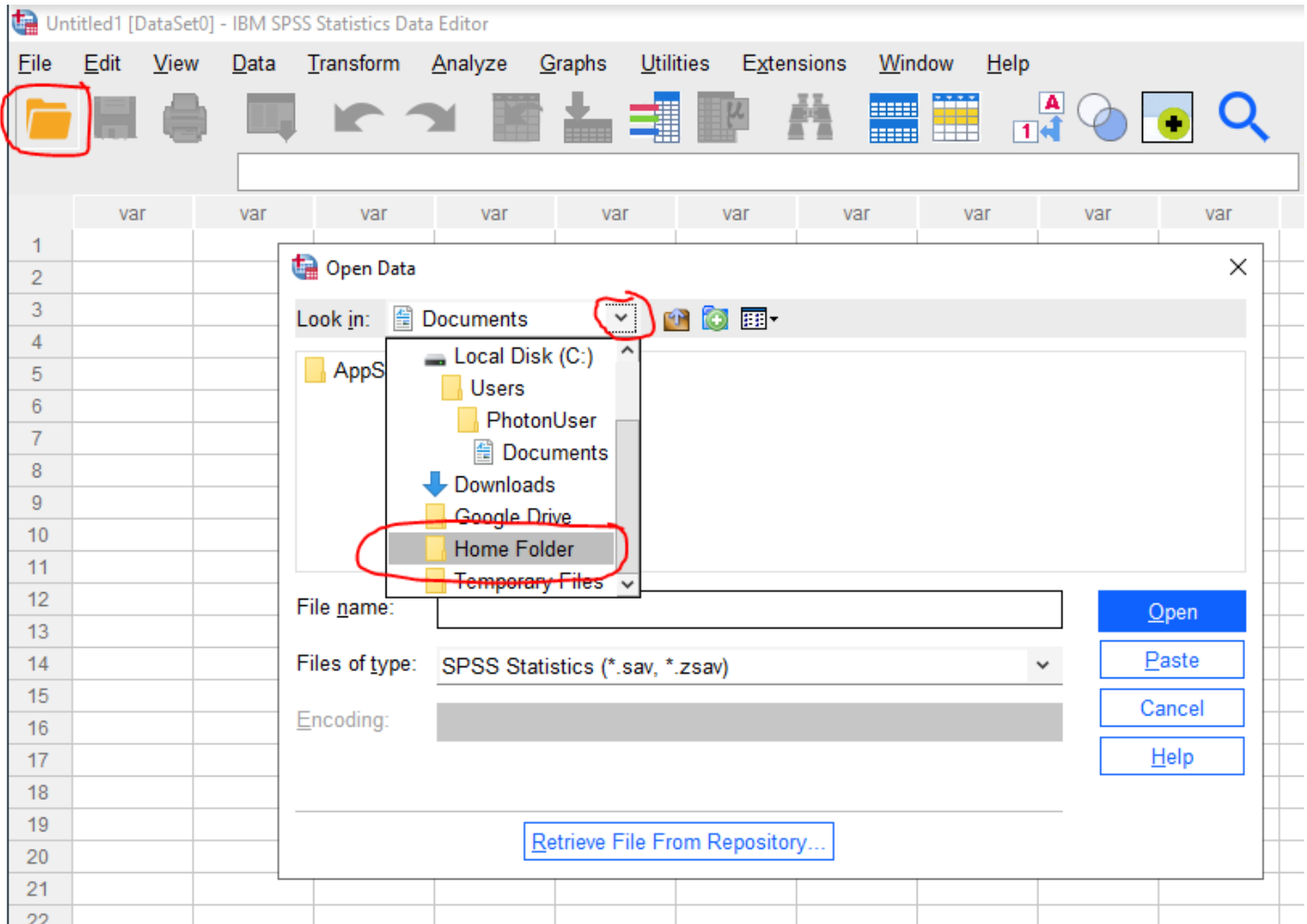


# Save Your Work

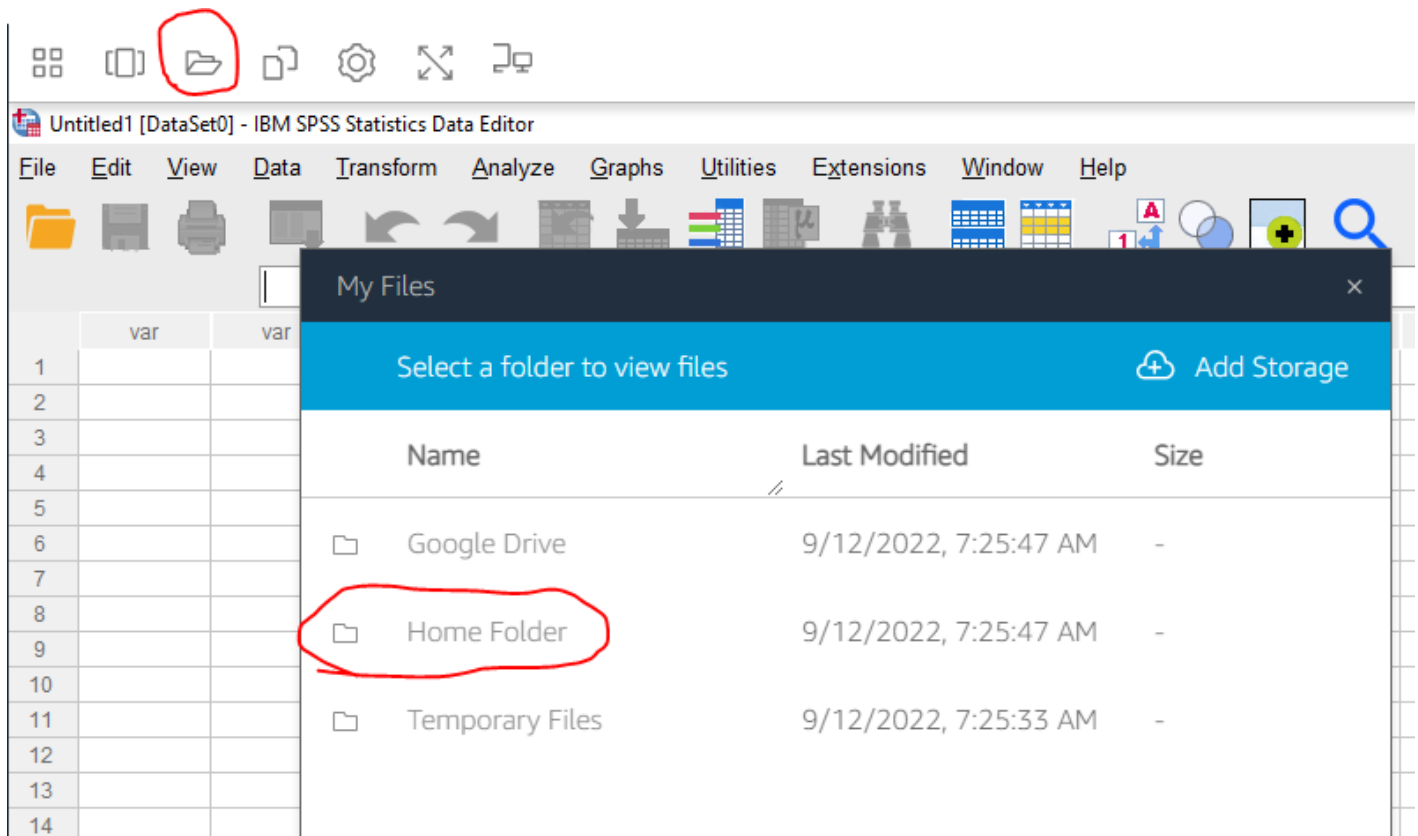
Be sure to save any work  
in one of the storage options,  
Home Folder or Google Drive.

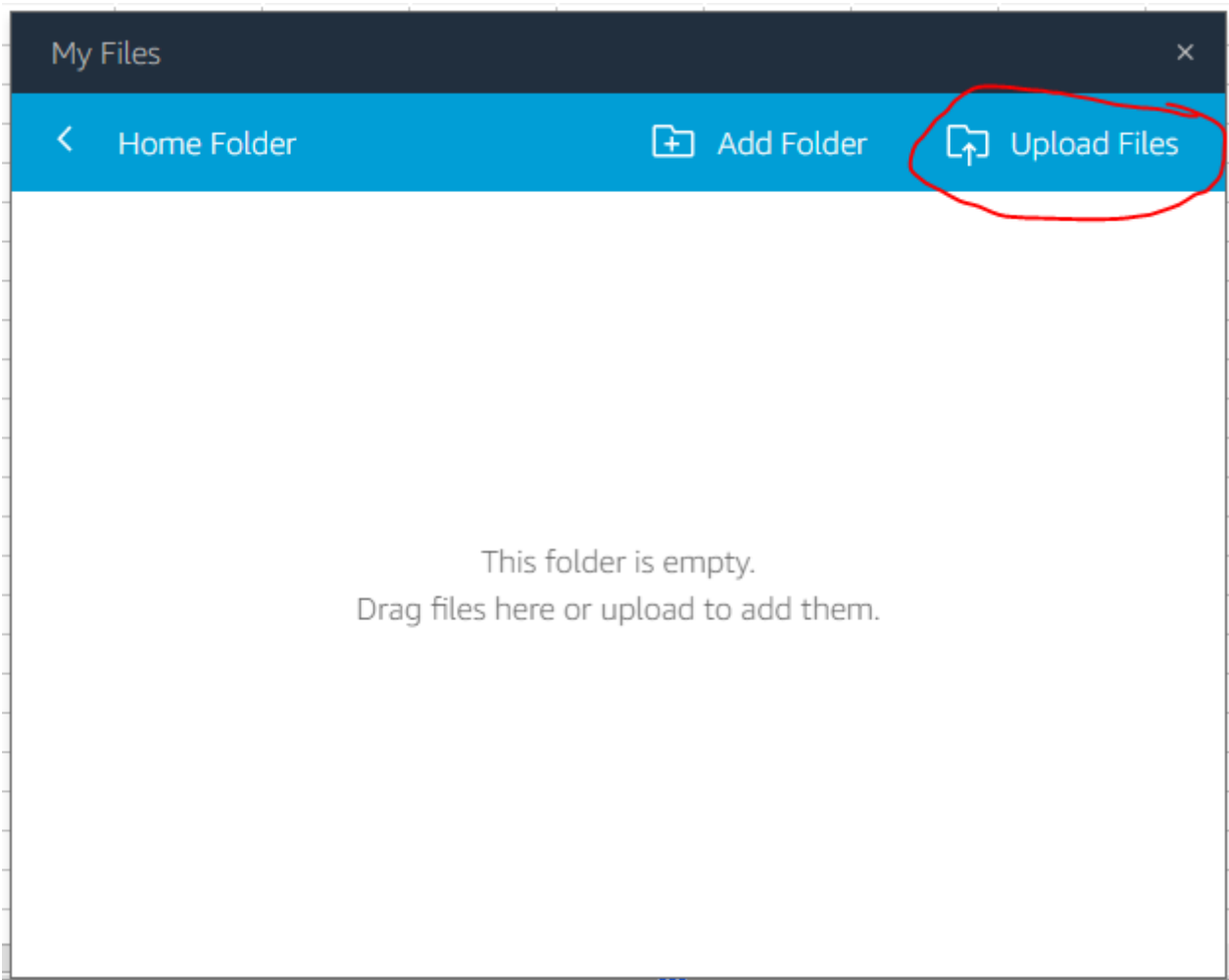
## Storage - Home Folder

When saving and opening files, you can use the special "**Home Folder**". This area persists across all AppStream sessions.



If you need to upload to the Home Folder from your own computer:

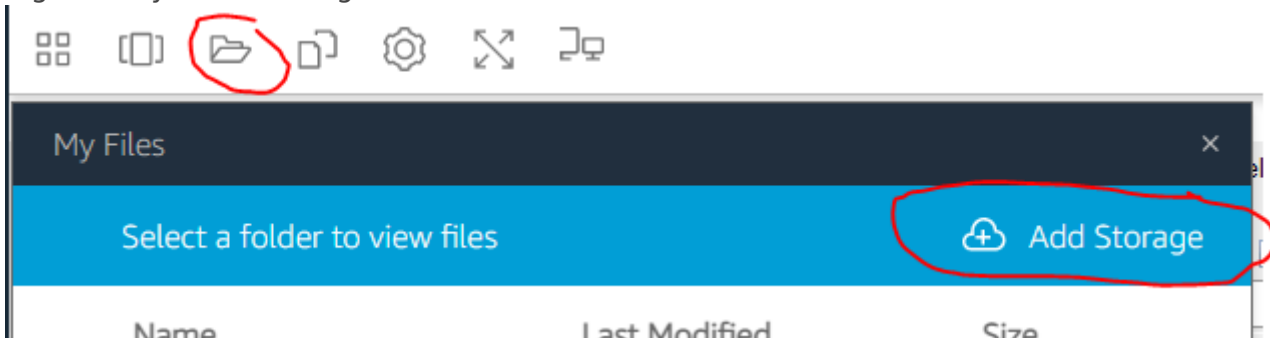




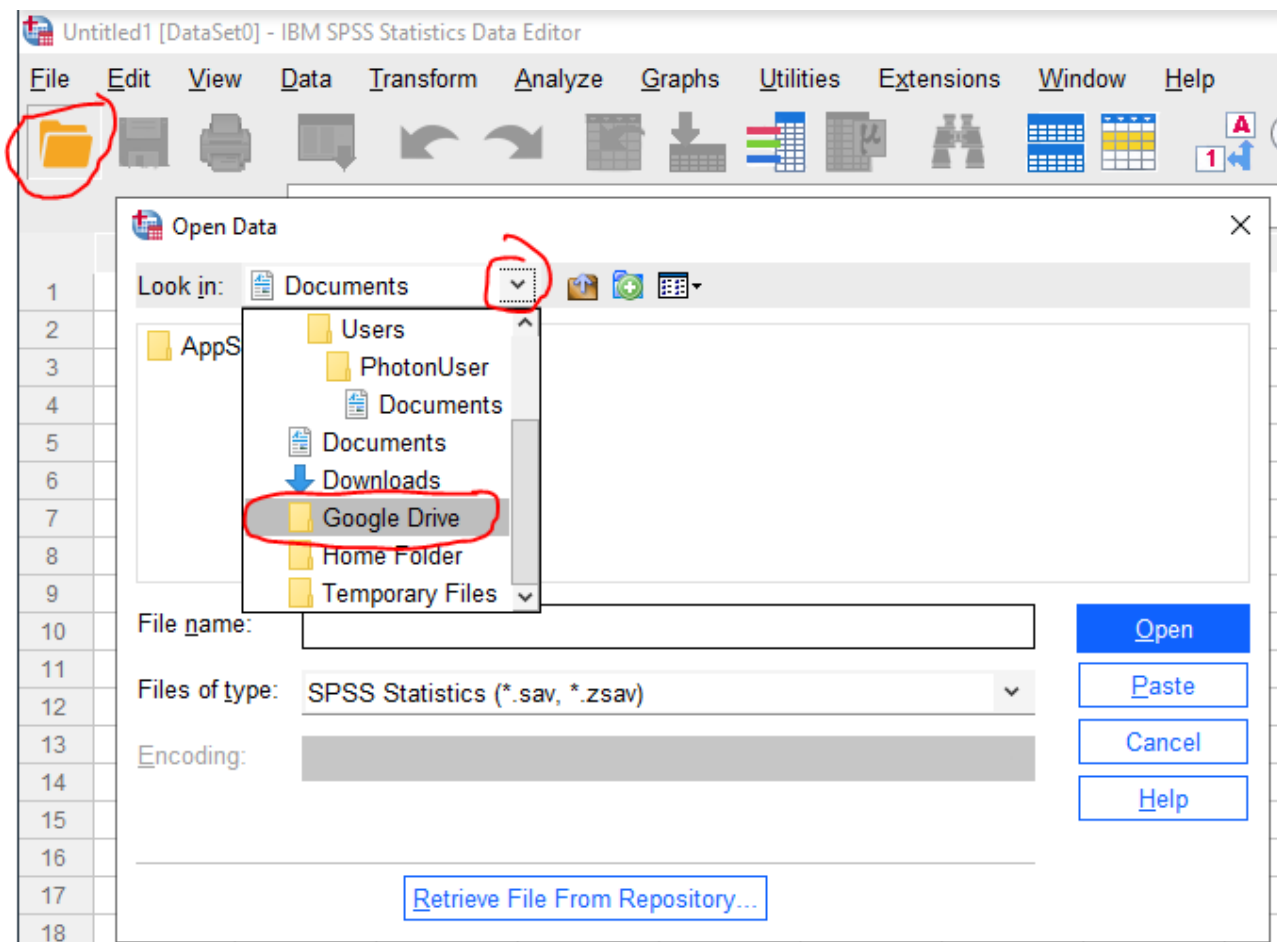
## Storage - Google Drive

You can also link your AppStream sessions to your URI Google Drive.

- Perform the one-time linking -- after clicking Add Storage, select Google Drive, and then login with your URI Google credentials.



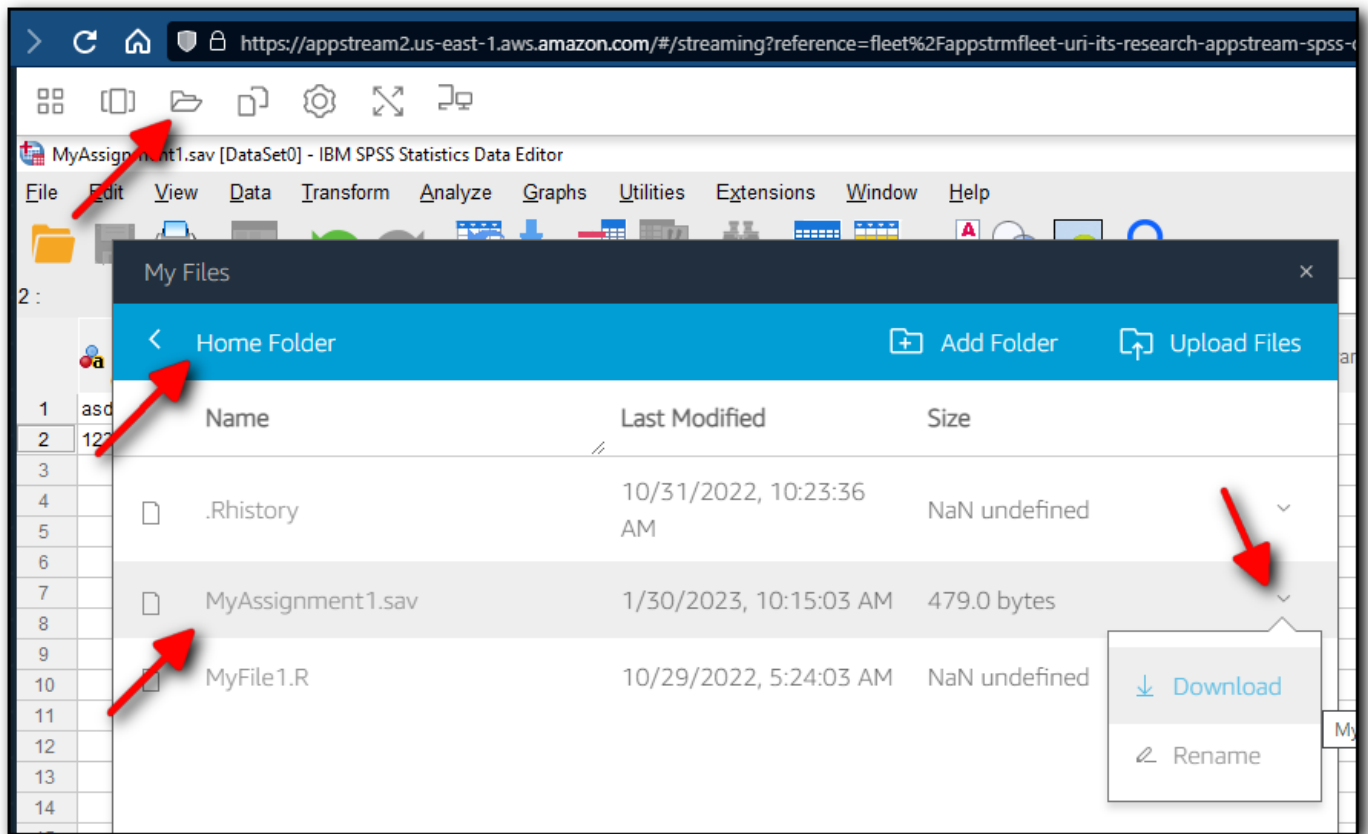
- Once linked, the Google Drive option will appear for opening and saving files. Future AppStream sessions will not need to re-link to Google Drive.



- Getting files in and out of Google Drive continues to be like how you would normally use Google Drive independently of SPSS AppStream -- browse to [drive.google.com](https://drive.google.com) and use your URI credentials.

## Downloading Files to Your Computer

**Once you have saved your files** to either the **Home Folder** or **Google Drive**, you can download the files to your own computer. This is sometimes needed, for example, when your instructor needs you to submit your files for handing in an assignment.



## Ending Your Session

There are no special directions for ending your SPSS AppStream session. You can just close your browser window / tab.

**If you are using a public / shared / lab computer be sure to log yourself out of any accounts!**

### IT Notes (students don't need to read)

- PSY 200 301 435
- Mark Robbins markrobb
- Kathleen Webster kwebster7
- Melissa Rothstein mrothstein
- Emily Carter ek\_carter
- Alana Egan aeganleong
- Andrea Paiva apaiva
- Steve Cirella scirellajr
- Active Directory group: Course-2023-Spring-PSY-200-301-435
- Monday
  - 200 11:00am - 11:50am (25)
  - 435 2:00pm - 3:15pm (25)
  - 301 3:30pm - 5:15pm (45)
- Tuesday

- 435 3:30pm - 4:45pm (13)
  - Wednesday
    - 200 11:00am - 11:50am (40)
    - 200 12:00pm - 12:50pm (40)
    - 200 1:00pm - 1:50pm (40)
    - 435 2:00pm - 3:15pm (25)
    - 301 3:30pm - 5:15pm (45)
  - Friday
    - 200 1:00pm - 1:50pm (15)
    - 200 2:00pm - 2:50pm (30)
- 

Revision #16

Created 2023-01-23 13:48:43 EST by Chi Shen

Updated 2026-02-24 20:49:28 EST by Chi Shen