

# Connecting to a Windows file share

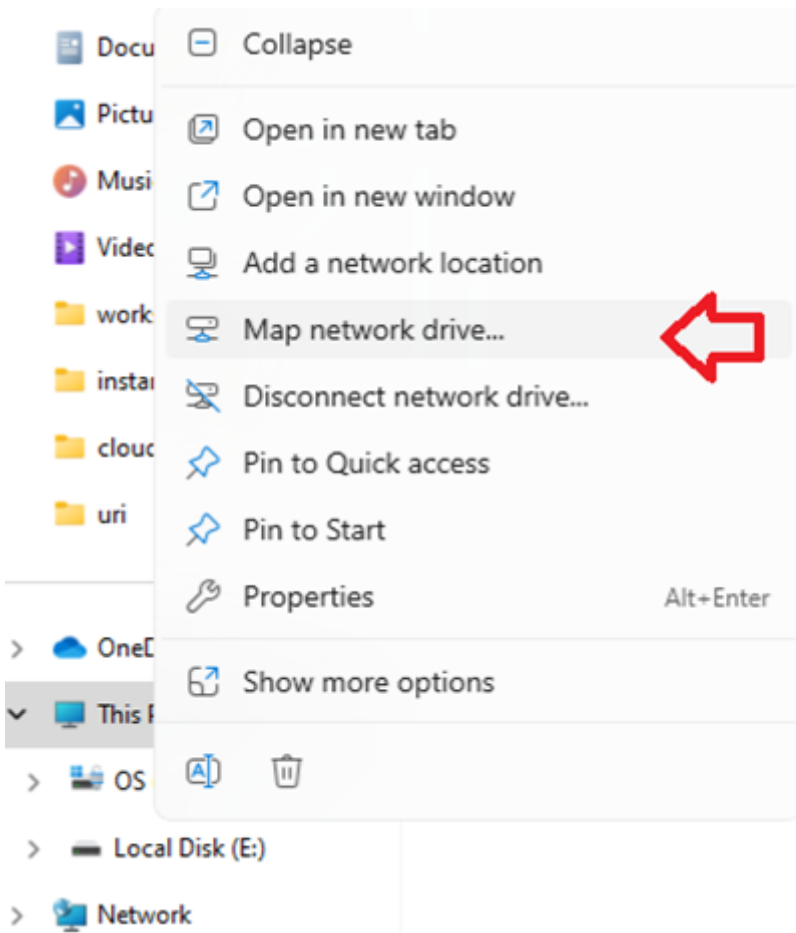
## Off-Campus Access Pre-Requisite

File shares require VPN for off-campus access: <https://notes.its.uri.edu/books/public/page/get-vpn>

## If you are on a Windows machine:

### Connect (for most people)

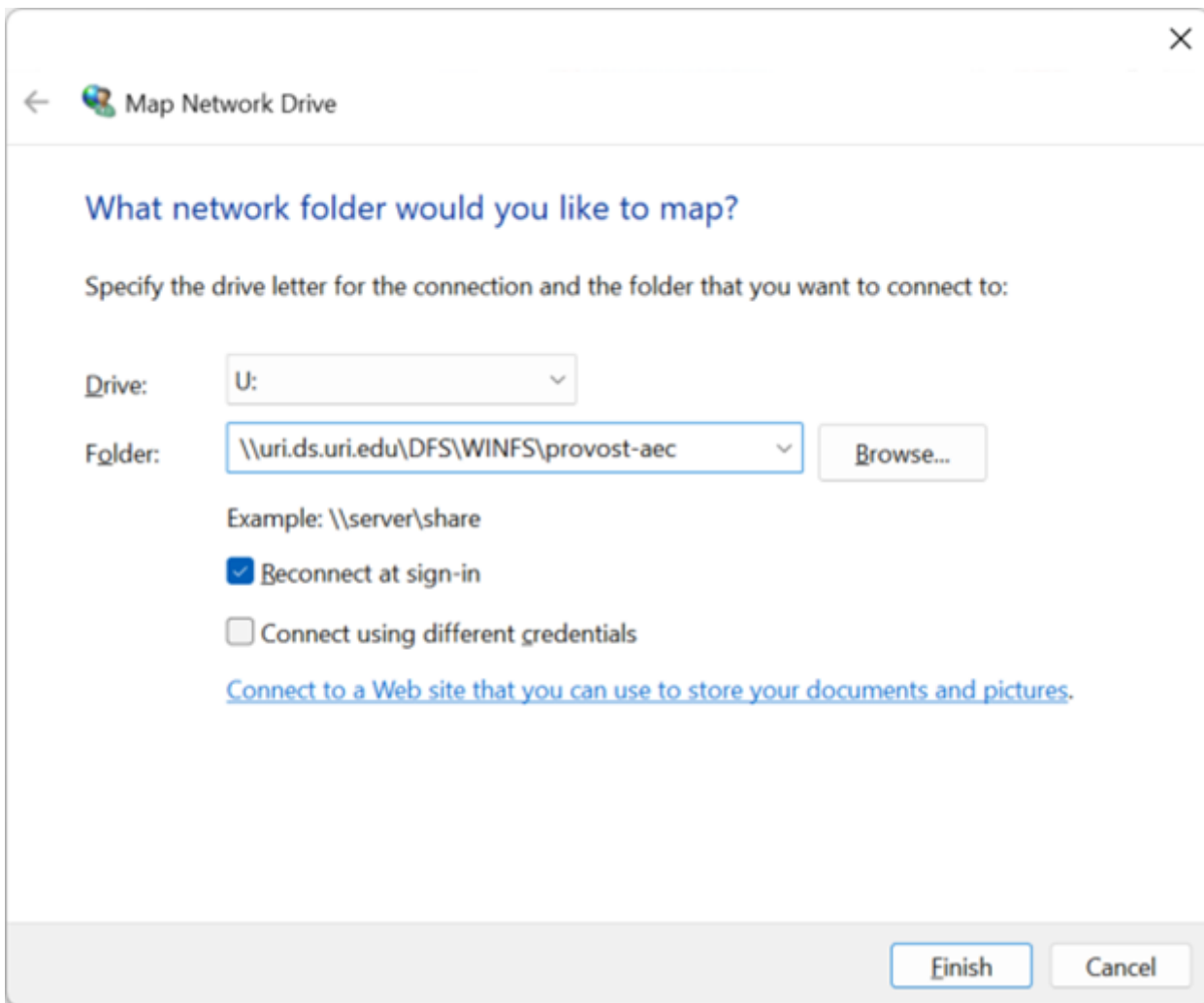
From an Explorer window, right click on This PC and select “Map network drive...”



**Drive**: choose a drive letter (usually decided by your local department). "U:" in this example.

**Folder**: enter the address to the share, usually given by ITS, and is usually the same for everyone in the same unit/dept.

Optionally, check "Reconnect at sign-in" if the machine you are using is personal to you, and you want this to be persistent through reboots.

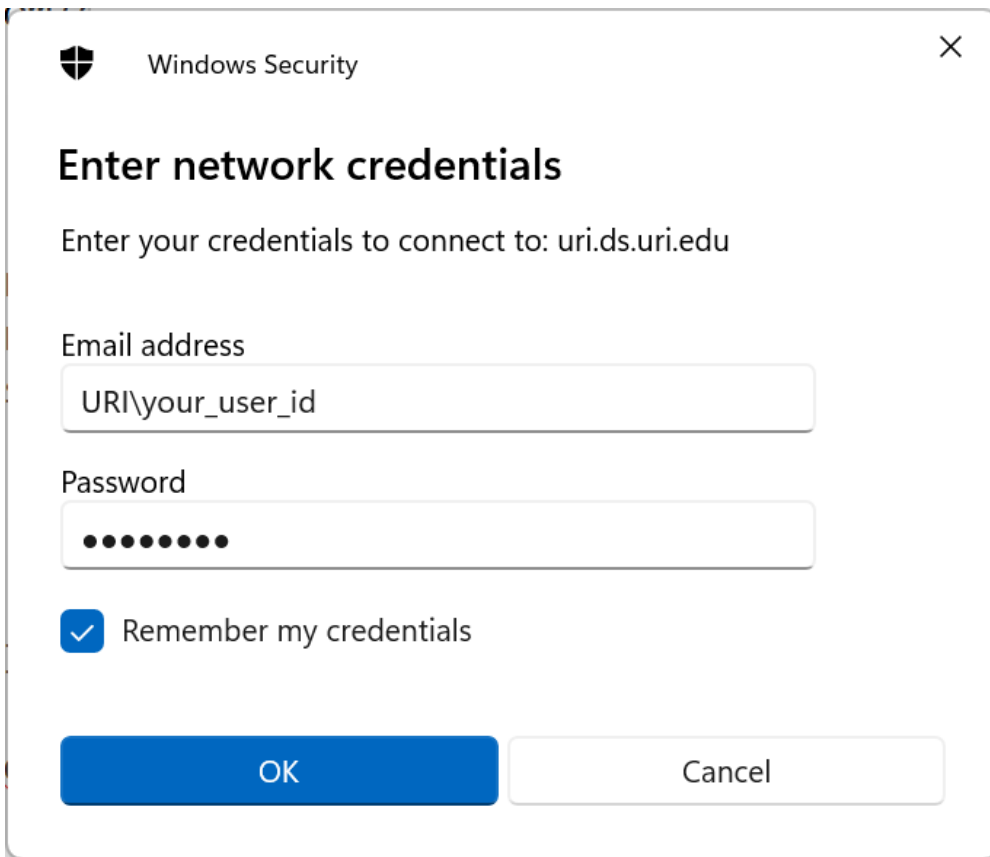


Check "Connect using different credentials" -- not always necessary, but this direction is more universal. You want to get to a prompt like the below, where you can enter your URI credentials. PINs, fingerprints, etc. -- none of these will work. Enter your URI credentials like below.

**Email address:** "URI\jsmith"

**Password:** your URI single sign-on (SSO) password

Optionally, check remember my credentials if this machine is personal to you.



## Connect using command line:

Usually this is used by IT/technical staff as an alternative way to connect.

Disconnect a drive U:

```
net use U: /d
```

Connect to a drive U:

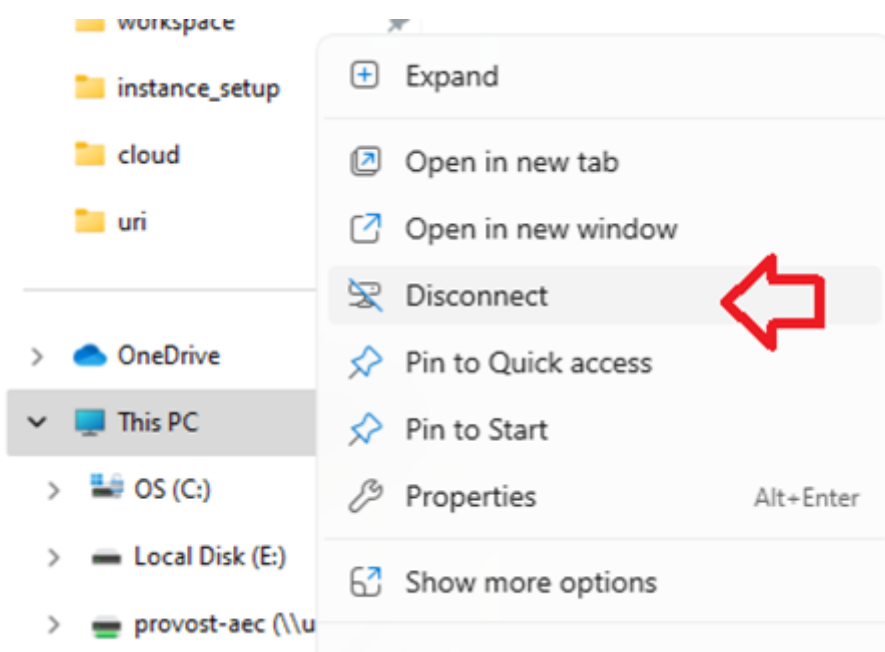
```
net use U: "\\uri.ds.uri.edu\DFS\WINFS\provost-aec" /user:URI\<your_user_id> * /PERSISTENT:Y
```

The asterisk in the above command will prompt you to enter the password.

## Disconnect

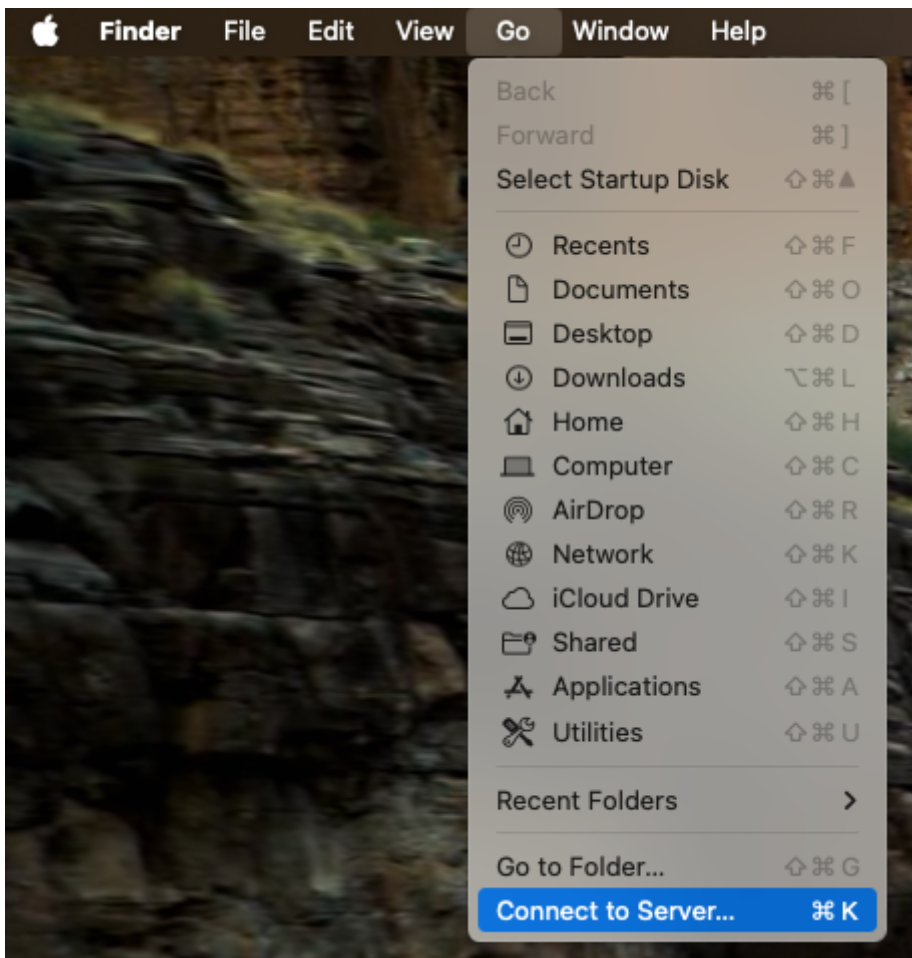
Usually not needed, but useful if you intend to disconnect to some connection that was made in the past.

This PC --> right-click --> Disconnect

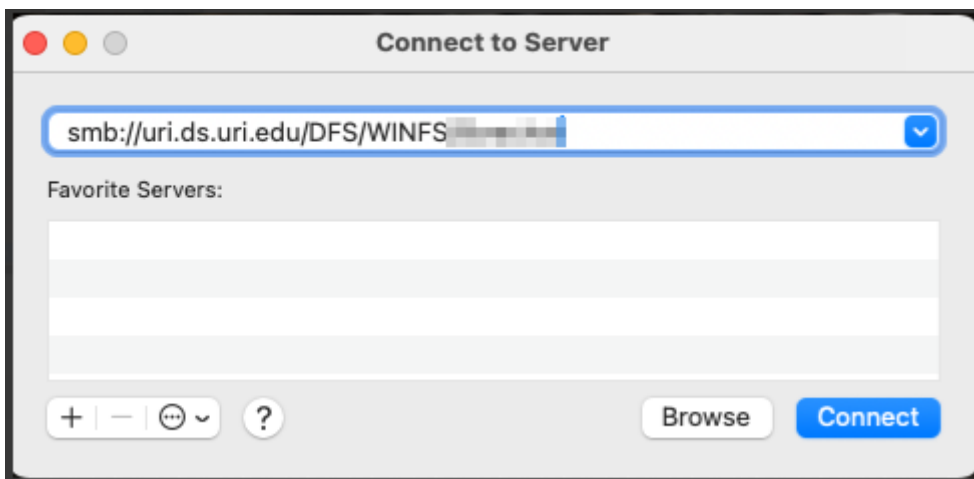


# If you are on a Mac machine:

1. Finder --> Connect to Server...



2. Enter the address given to you:



3. Enter your SSO username (not the full email address, just the username) and SSO password.



Enter your name and password for the server  
"uri.ds.uri.edu".

Connect As: ☐ Guest  
☒ Registered User

Name:

Password:

☐ Remember this password in my keychain

Cancel

Connect

Revision #14

Created 26 February 2025 12:15:51 by Patrick Canole

Updated 13 June 2025 11:09:26 by Chi Shen