

# Perform Active Directory Tasks Using Shared Utility Machine

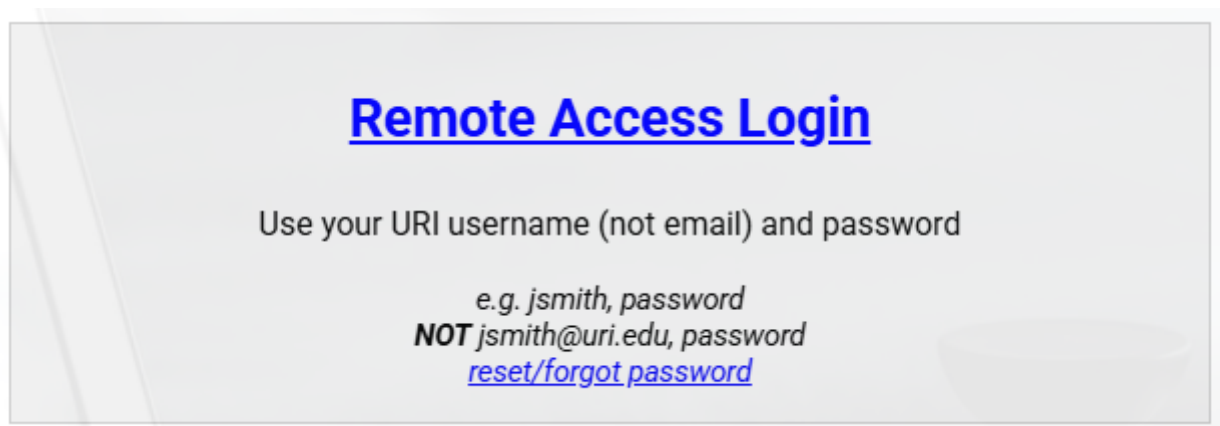
## Purpose

The purpose of this procedure is to enable designated ITS staff, distributed IT staff, and other designated people to perform Active Directory tasks via a pre-configured, on-prem domain-joined utility Windows machine. There are many situations where someone may have the responsibility to, for example, add and remove members to AD groups, but they do not themselves have a Windows machine or have the appropriate AD utilities installed.

## Directions

From any machine with an Internet and a web browser, go to <https://remoteaccess.uri.edu>.

Login as directed:



Select the Active Directory Utility Server

## ALL CONNECTIONS

- ⊕ URI Budget Office EPM Automate server
- ⊕ URI Facilities
- ⊕ URI Faculty and Staff
- ⊕ URI Grad School of Oceanography
- ⊖ URI ITS Internal
  - 🖥 10.140.1.201
  - 🖥 Active Directory Utility Server
  - 🖥 Informatica dev (10.135.55.4)
  - 🖥 Informatica dev (dinfoagent, 10.138.1.200)
  - 🖥 Informatica prod (pinfoagent, 10.138.1.13)
  - ⊕ SSH/SFTP for websites
- ⊕ URI Memorial Union


Enter your SSO credentials, pass Duo prompt:

Username:

Password:

Continue


Cancel





Powered by Duo Security

Device: iPhone (XXX-XXX-5995)

Choose an authentication method

 Duo Push Send Push

 Phone Call Call Me

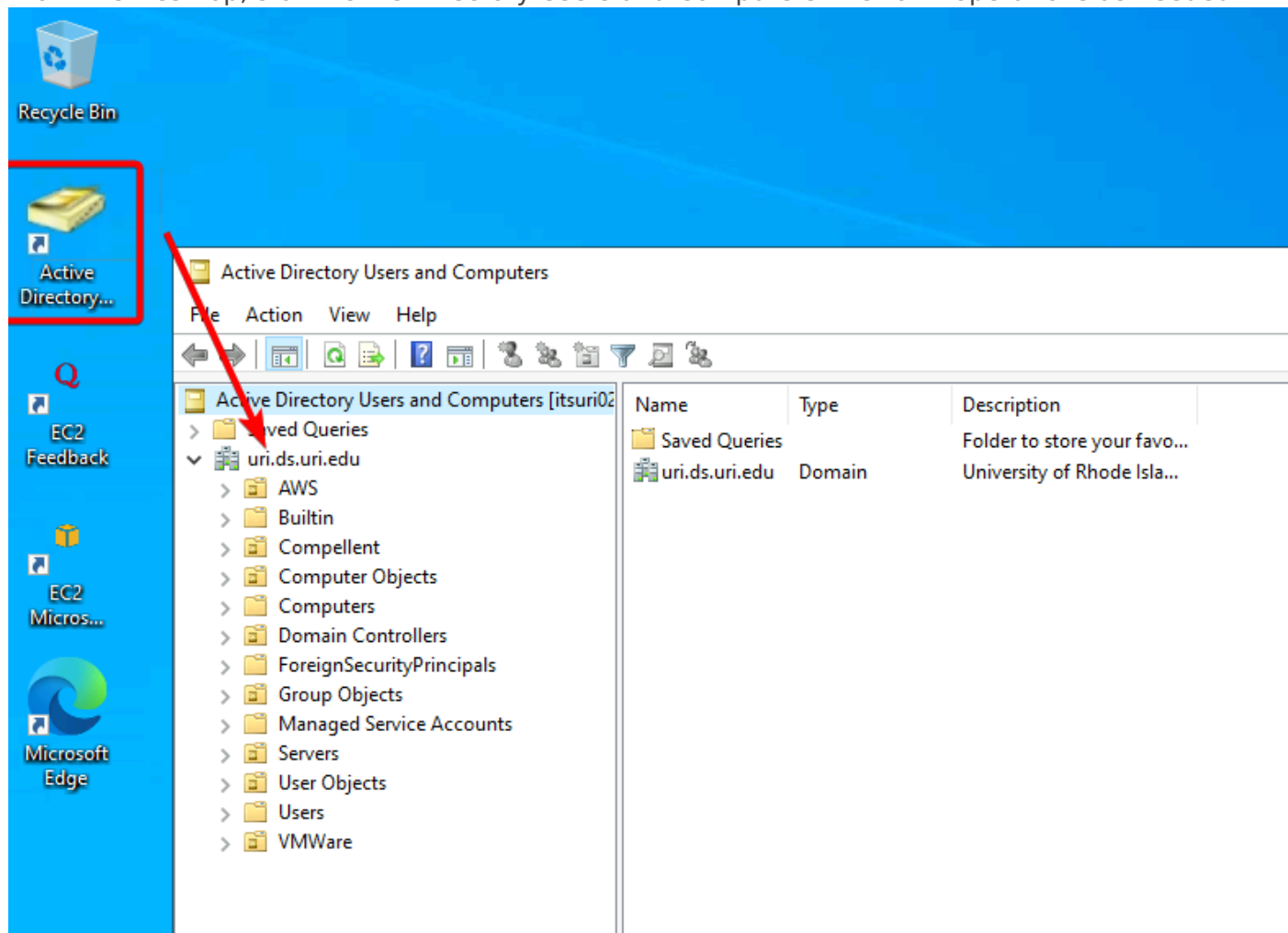
 Passcode Enter a Passcode

Pushed a login request to your device...

Cancel

# Active Directory Users and Computers

From the Desktop, start Active Directory Users and Computers. Perform operations as needed.



Revision #1

Created 20 May 2025 17:57:12 by Chi Shen

Updated 20 May 2025 18:06:42 by Chi Shen