

# Public

- [Connecting to a Windows file share](#)

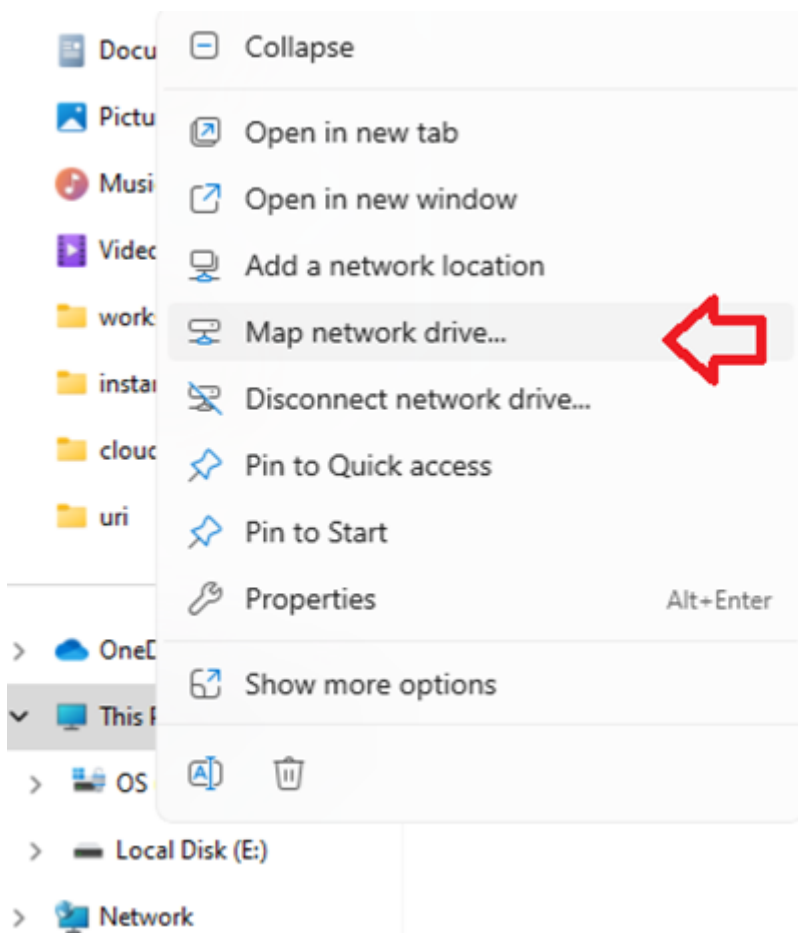
# Connecting to a Windows file share

## Off-Campus Access Pre-Requisite

File shares require VPN for off-campus access: <https://notes.its.uri.edu/books/public/page/get-vpn>

## If you are on a Windows machine: Connect (for most people)

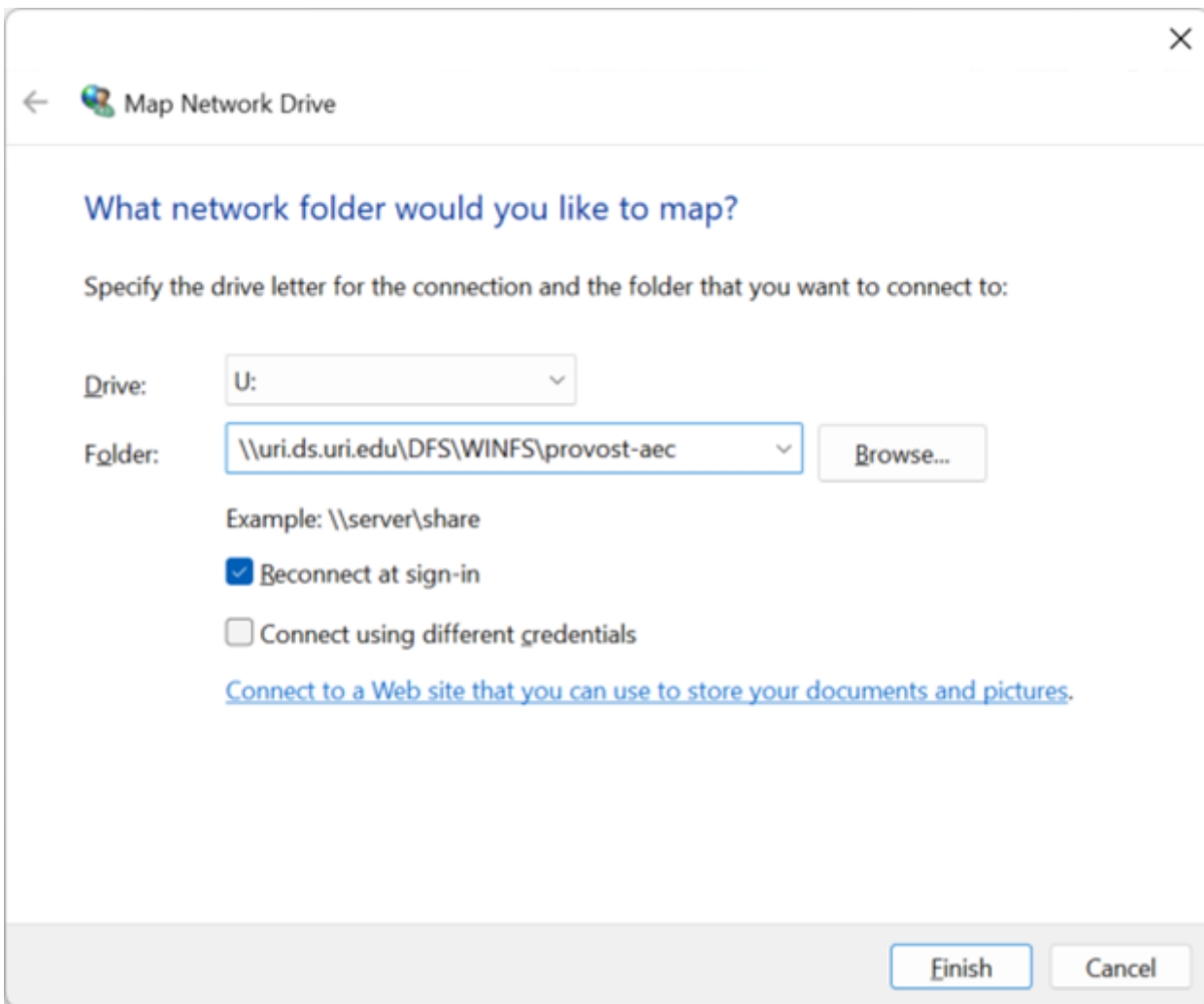
From an Explorer window, right click on This PC and select “Map network drive...”



**Drive:** choose a drive letter (usually decided by your local department). "U:" in this example.

**Folder:** enter the address to the share, usually given by ITS, and is usually the same for everyone in the same unit/dept.

*Optionally*, check “Reconnect at sign-in” if the machine you are using is personal to you, and you want this to be persistent through reboots.



## Connect using command line:

\* Usually this is used by IT/technical staff as an alternative way to connect.

\* If you are unfamiliar with using a command line please use the method above

Disconnect a drive U:

```
net use U: /d
```

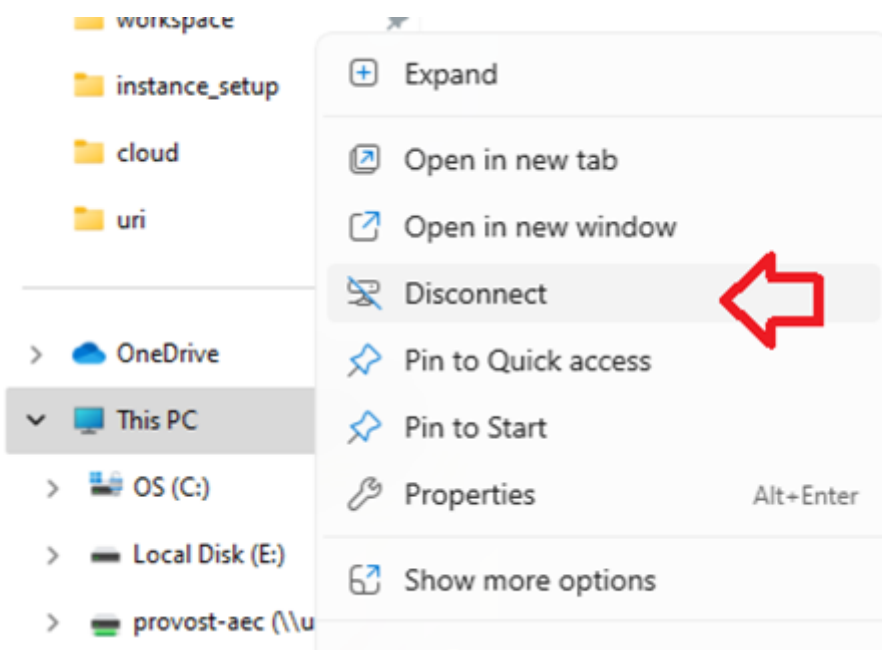
Connect to a drive U:

```
net use U: "\\uri.ds.uri.edu\DFS\WINFS\provost-aec" /user:URI<your_user_id> * /PERSISTENT:Y
```

The asterisk in the above command will prompt you to enter the password.

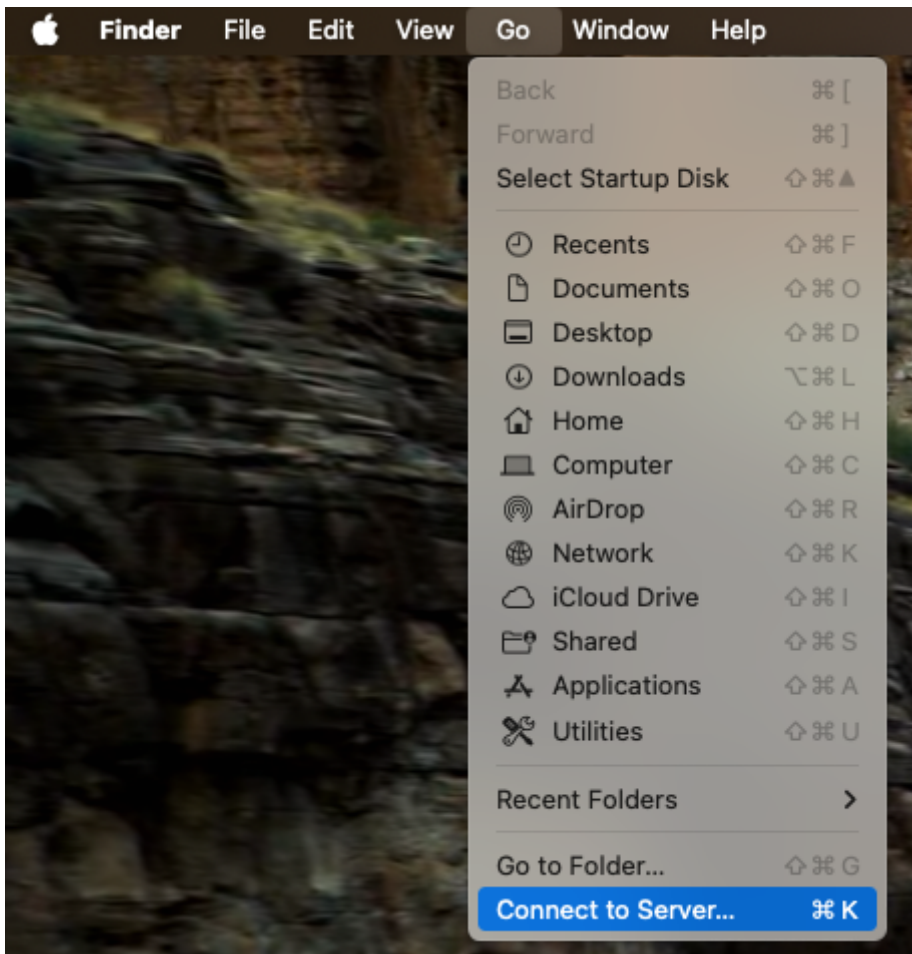
## Disconnecting a drive

This PC --> right-click --> Disconnect

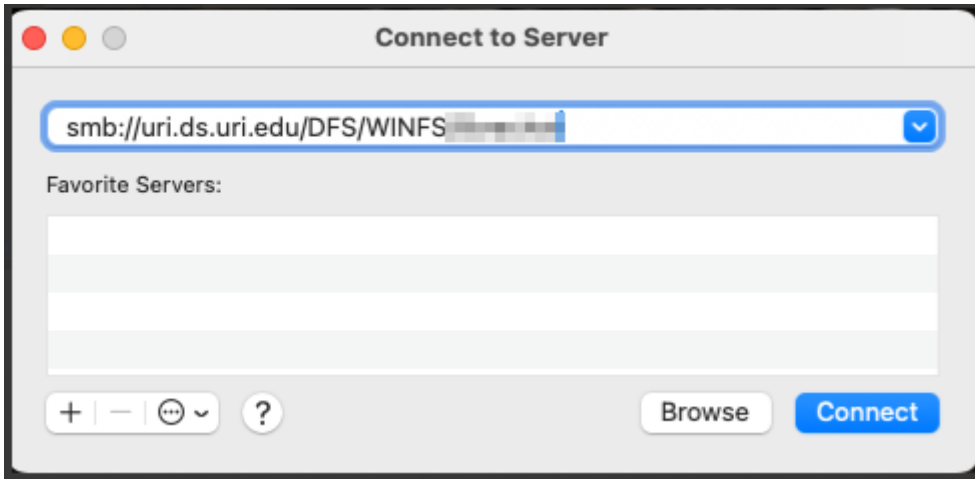


## If you are on a Mac machine:

1. Finder --> Connect to Server...



2. Enter the address given to you:



3. Enter your SSO username (not the full email address, just the username) and SSO password.

