

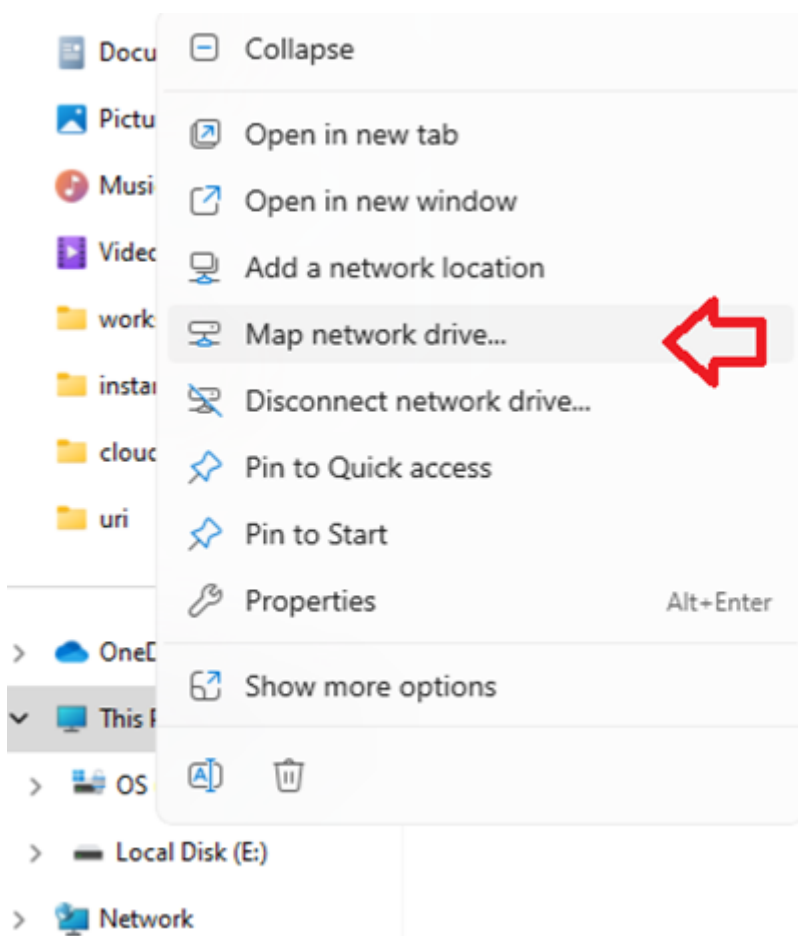
Connecting to a Windows file share

Off-Campus Access Pre-Requisite

File shares require VPN for off-campus access: <https://notes.its.uri.edu/books/public/page/get-vpn>

If you are on a Windows machine: Connect (for most people)

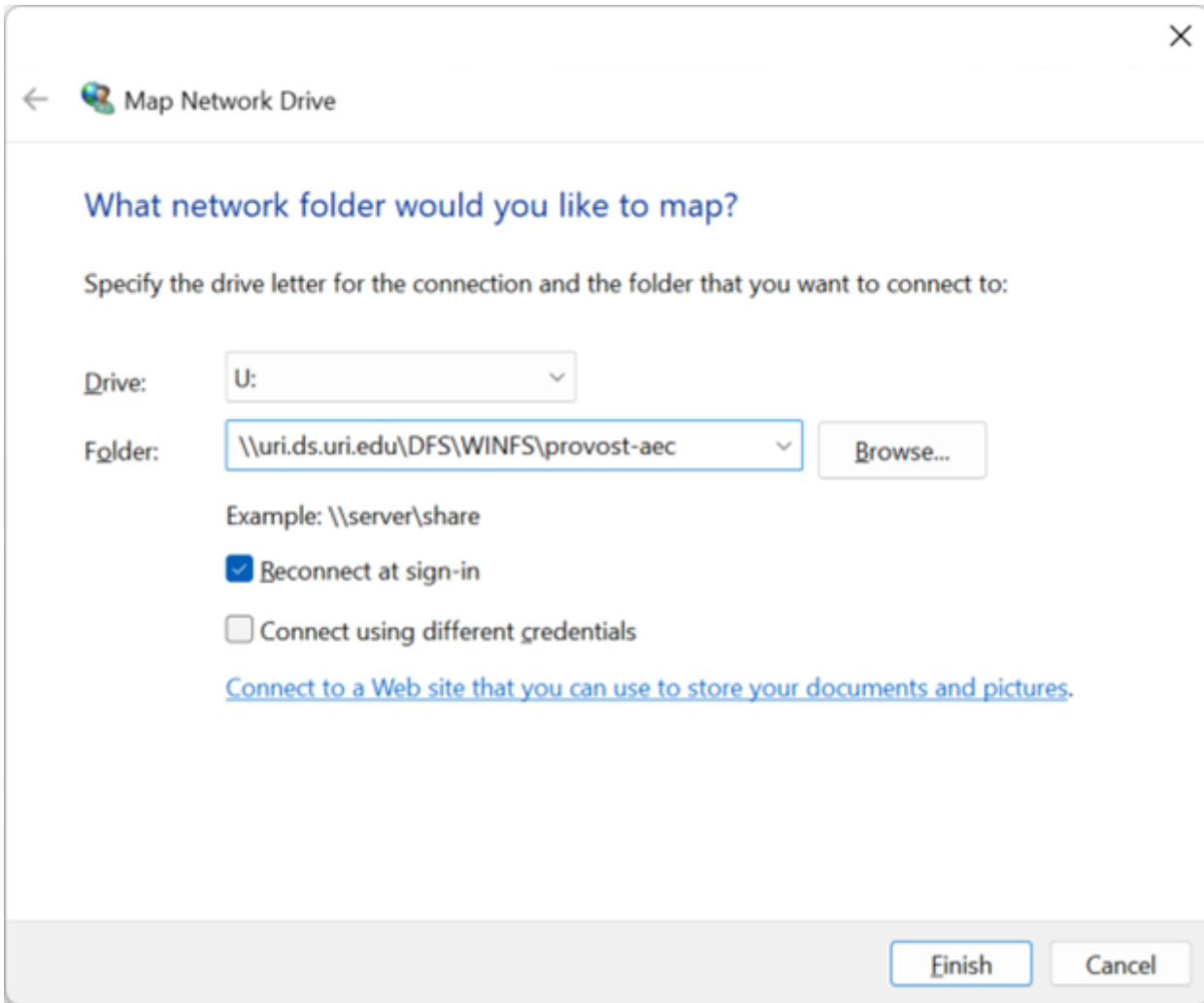
From an Explorer window, right click on This PC and select “Map network drive...”



Drive: choose a drive letter (usually decided by your local department). "U:" in this example.

Folder: enter the address to the share, usually given by ITS, and is usually the same for everyone in the same unit/dept.

Optionally, check “Reconnect at sign-in” if the machine you are using is personal to you, and you want this to be persistent through reboots.



Connect using command line:

* Usually this is used by IT/technical staff as an alternative way to connect.

* If you are unfamiliar with using a command line please use the method above

Disconnect a drive U:

```
net use U: /d
```

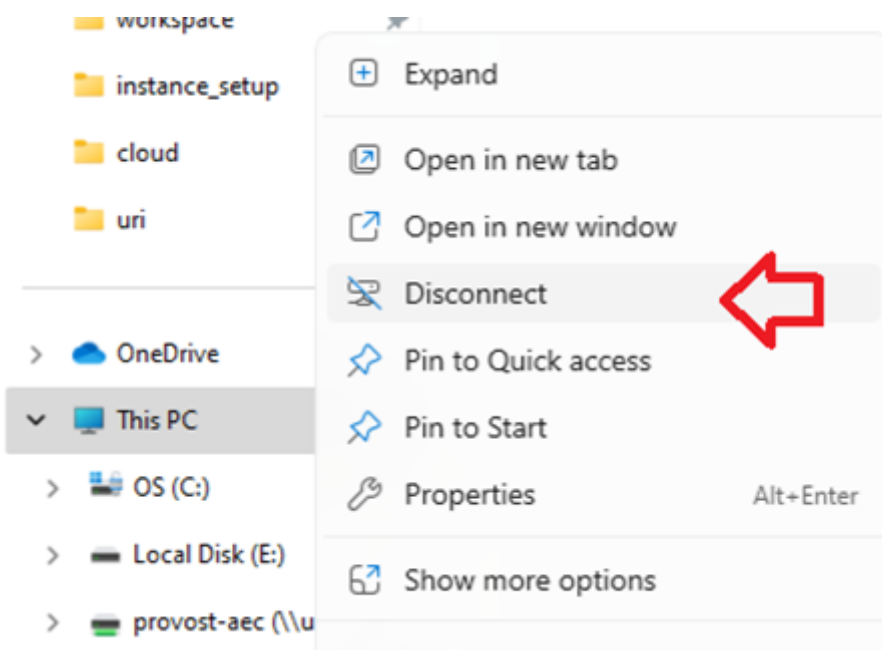
Connect to a drive U:

```
net use U: "\\uri.ds.uri.edu\DFS\WINFS\provost-aec" /user:URI<your_user_id> * /PERSISTENT:Y
```

The asterisk in the above command will prompt you to enter the password.

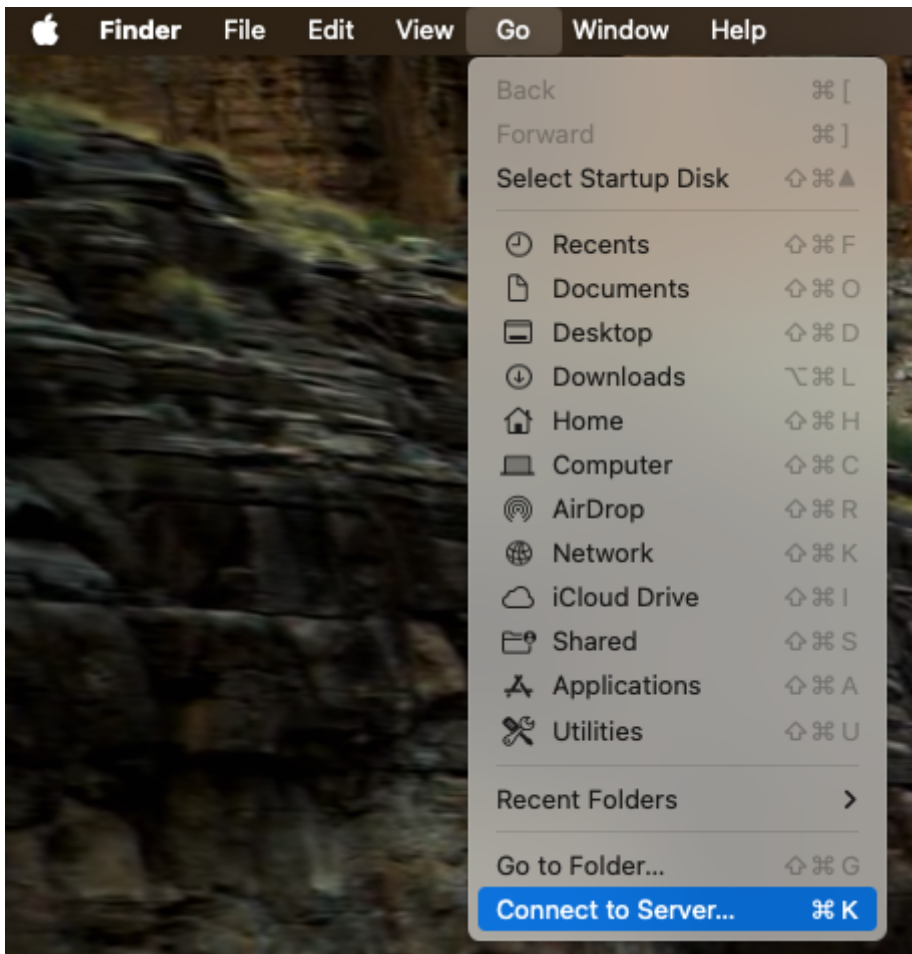
Disconnecting a drive

This PC --> right-click --> Disconnect

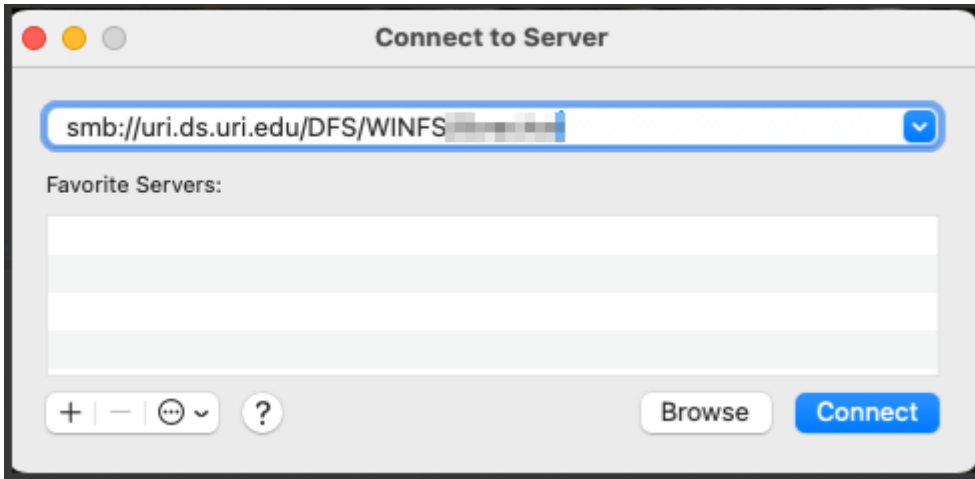


If you are on a Mac machine:

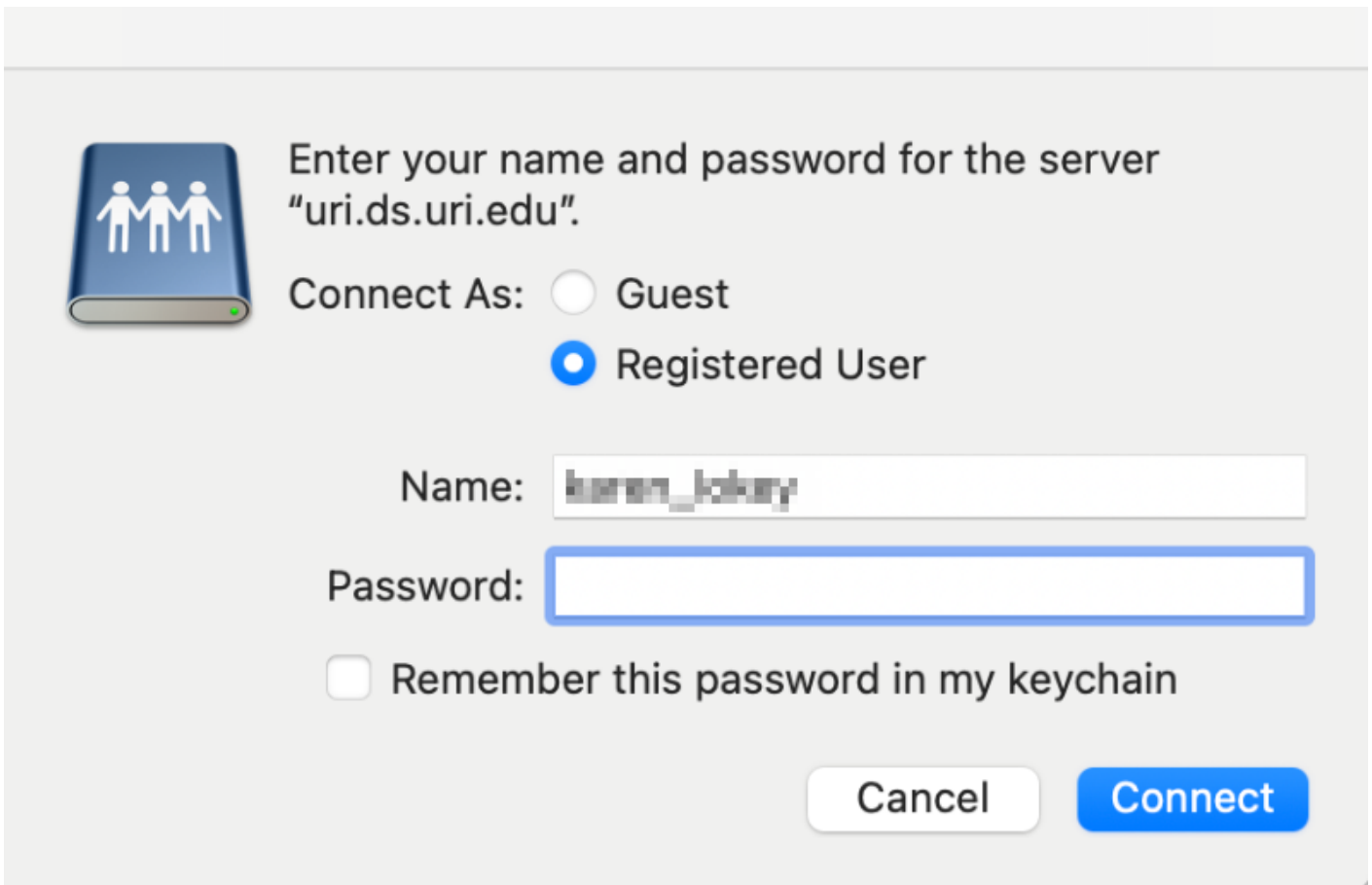
1. Finder --> Connect to Server...



2. Enter the address given to you:



3. Enter your SSO username (not the full email address, just the username) and SSO password.



Revision #19

Created 2025-02-26 12:15:51 EST by Patrick Canole

Updated 2026-02-24 20:51:48 EST by Chi Shen